

# MEIJO JAPAN STUDY TOUR [2023 SUMMER]

JUNE 27-JULY 13, 2023

**3-WEEK  
PROGRAM**

- ◆ Traditional Japan
- ◆ History of Nagoya
- ◆ Japanese Culture & Society
- ◆ Manufacturing
- ◆ Cultural Activities

# About Meijo University

Meijo University (MU) is located in Nagoya, Japan. Established in 1926 as the Nagoya Science and Technology Course, Meijo University is one of the largest universities in the Chubu (Central) Region. It is a hub of learning and research in the region, offering quality education and excellent infrastructure to students from all around the world. Meijo University has produced 3 Nobel Prize winners in the field of Chemistry (Dr. Akira Yoshino in 2019) and Physics (Dr. Isamu Akasaki & Dr. Hiroshi Amano in 2014).



## About This program

The objective of this program is to help the participants understand more about Japan and promote international exchange. Class content includes International Japanese Studies, Japanese language, and Japanese culture experience; classes about Japanese culture, society, art, and pop culture. In addition to learning classroom Japanese, the participants can interact with Meijo Japanese students on campus to put what you have learned into practice.



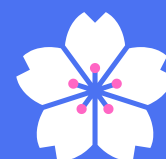
### Japanese

This course is aimed for all participants who want to learn Japanese. We provide the courses in 3 levels, from beginners to advanced learners.



### Japanese Cultural Experience

MU will organize various exciting and popular cultural events (Manga, J-POP Music, and Japanese Idol Culture). It's a great opportunity for you to learn about Japanese culture in-depth.



### International Japanese Studies

International Japanese Studies will be taught in English to learn more about its culture, history and Chubu (Central) Region around us. Chubu Region is located between East Japan, which includes the Kanto/Tohoku Regions and Hokkaido, and West Japan, which comprises the Kinki/Chugoku/Shikoku/Kyushu Regions.

Chubu Region is formed by Greater Nagoya (Chubu District), and is one center of Japan's culture and industry along with Greater Tokyo (Capital District) and Greater Osaka (Kansai District).

In this lecture, we will aim to deepen your understanding of the history and culture of Chubu Region. From history of Japan to a part of Japanese Pop Culture, you can explore a wide variety of fields about Japan.

## Previous Participants' Voice



The course gave me a lot of opportunities to improve and meet new people!

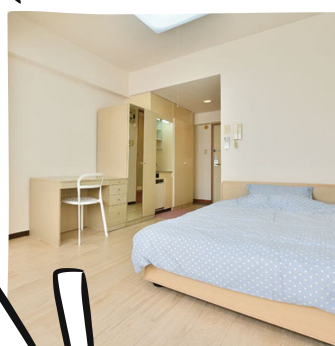


Studying at Meijo university has been a very precious experience to me.



This is absolutely the best event! Class and activities are all fun. People who like Japanese culture must not miss it!

## Accommodation



### (A) Hotel

The HOTEL MYSTAYS Nagoya Sakae, where is a great home base for your city exploration. To MU Campus 30-minute by train and walk.

### (B) MU dormitory

The remarkably tidy facility is conveniently located just a 3-minute walk from MU campus. Rooms are equipped with automatic locking doors for your safety.

\*Note: Applicants must be studying at our current partner university and obey to the MU dormitory rules.

## Requirements to apply

Each applicant must satisfy all of the following points.  
 (1) Applicant is studying at our current and future partner universities.  
 (2) Applicant must be enthusiastic to take part in international exchange activities organized by MU.

## Program Fee

Duration: June 27-July 13, 2023  
 A: 3-week + Hotel: JPY187,340  
 B: 3-week + Student Dormitory: JPY120,500

Waived: Tuition, airport pick-up fee, field trips (Total: JPY150,000)  
 Included: Japanese Cultural Experience fees, manaca, field trips.  
 Not included: Round-trip flight ticket, visa fees, overseas insurance voucher, meals, personal allowances, Wi-Fi

APPLY HERE



\*ID is required to apply. Please kindly ask an international coordinator at your university.

■ 2023 MEIJO JAPAN STUDY TOURS [summer]

Program Duration:

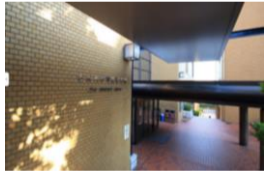

June 27-July 13,2023 (3-week)

A:3-week Hotel : JPY¥187,340

B: 3-week+Student Dormitory : JPY¥120,500円

contents	
Japanese	10
International Japanese Studies	14
Japanese Cultural Experience	4
Field trip	4
Cultural Exchange Activities	4
Free Day	2.5

B:Breakfast L:Lunch D:Dinner

WEEK 1:Tempaku Campus																				*The schedule may be subject to change.					
TIME		Check-In	B	X	DAY1	B	X	DAY2	B	X	DAY3	B	X	DAY4	B	X	DAY5	B	X	DAY6	B	○			
		26-Jun	L	X	27-Jun	L	X	28-Jun	L	X	29-Jun	L	X	30-Jun	L	X	1-Jul	L	X	2-Jul	L	X			
		Mon	D	X	Tue	D	X	Wed	D	X	Thu	D	X	Fri	D	X	Sat	D	X	Sun	D	X			
1	9:10~10:40	Chubu Centrair International Airport pick-up  Hotel MU Dormitory Check-In  Check-In time: ①MU dormitory 10:00~16:00  ②Hotel 14:00~00:00			※8:50@ MU Dormitory 9:00~10:00 Dormitory Orientation			Japanese A			Japanese A														
2	10:50~12:20				10:00~11:00 Program Orientation						International Japanese Studies			International Japanese Studies [Field work]											
Lunch	12:20~13:00								※11:00@ Meeting point① 11:00~17:00																
3	13:10~14:40					Japanese Cultural Experience Manga·Illustration			Japanese Cultural Experience			※13:30@ Meeting point① 13:30~17:00			International Japanese Studies [Field work]										
4	14:50~16:20					International Japanese Studies			Osu Shopping District·Maid Cafe			Cultural Exchange Activities with Meijo Students			International Japanese Studies [Field work]										
5	16:30~18:00																								
WEEK 2:Nagoya Dome-Mae Campus																									
TIME		DAY7	B	X	DAY8	B	X	DAY9	B	X	DAY10	B	X	DAY11	B	X	DAY12	B	X	DAY13	B	X			
		3-Jul	L	X	4-Jul	L	X	5-Jul	L	X	6-Jul	L	X	7-Jul	L	X	8-Jul	L	X	9-Jul	L	X			
		Mon	D	X	Tue	D	X	Wed	D	X	Thu	D	X	Fri	D	X	Sat	D	X	Sun	D	X			
1	9:10~10:40	Japanese A			Japanese A			Japanese A			Japanese A														
2	10:50~12:20	International Japanese Studies			International Japanese Studies			Japanese A			International Japanese Studies														
Lunch	12:20~13:00																								
3	13:10~14:40	13:30~15:00 Japanese Cultural Experience			※13:30@ Meeting point② 13:30~15:00			Free Time			※13:30@ Meeting point② 13:30~17:00														
4	14:50~16:20	Go			Cultural Exchange Activities with Meijo Students						Cultural Exchange Activities with Meijo Students														
5	16:30~18:00																								
Nagoya Dome-Mae Campus											Tempaku Campus				Check-Out			Note							
TIME		DAY14	B	X	DAY15	B	X	DAY16	B	X	DAY17	B	X	DAY18	B	X									
		10-Jul	L	X	11-Jul	L	X	12-Jul	L	X	13-Jul	L	X	14-Jul	L	X									
		Mon	D	X	Tue	D	X	Wed	D	X	Thu	D	X	Fri	D	X									
1	9:10~10:40	Japanese A			Japanese A						Japanese A														
2	10:50~12:20	International Japanese Studies			International Japanese Studies						International Japanese Studies														
Lunch	12:20~13:00																								
3	13:10~14:40	International Japanese Studies [Sumo]			13:30~15:30 Japanese Cultural Experience																				
4	14:50~16:20	International Japanese Studies [Sumo]			Japanese confectionery making																				
5	16:30~18:00																								
																	Meeting point① Tempaku Campus			Meeting point② Nagoya Dome-Mae Campus					
																									
																	Check-Out								
																	HOTEL 9:00~11:00								
																	MU Dormitory 9:00~11:00								

SHORT TERM PROGRAM

MEIJO JAPAN STUDY TOUR

**【2023 Summer】**

Application Guideline

The following is the guideline of Meijo University's short term program (2023 MEIJO JAPAN STUDY TOUR). The program has been designed for students who are studying at our current, and future, partner universities. It is a 3-week program totally operated in English. It is designed for students who are interested in Japanese culture.

### **1. Requirements to apply**

Each applicant must satisfy all of the following points.

- (1) Applicant is studying at our current and future partner universities.
- (2) Applicant must be enthusiastic to take part in international exchange activities organized by MU.

### **2. Duration of the programs**

#### ■ **2023 MEIJO JAPAN STUDY TOUR (summer)**

**【Program Duration】** from June 27<sup>th</sup>, 2023 to July 13<sup>th</sup>, 2023 (3 weeks)

**【Hotel /MU dormitory】**

**Check in: June 26<sup>th</sup>**

**Check out: July 14<sup>th</sup>**

**【Numbers of Participants】 35**

※Due to the effects of COVID-19 there may be changes to the program schedule, the application requirements etc.

### **3. Details of program**

#### (1) Program policy

The program provides opportunities to understand more about Japan in English while participants are learning basic Japanese. This program does not grant credits, but will issue a certificate of completion.

#### (2) Program Contents

We provide the following contents specially designed for 2023 MEIJO JAPAN STUDY TOUR-Summer.

#### ■ **Japanese (language)**

This course is aimed for all participants who want to learn Japanese. We provides courses in 3 levels, from beginners to advanced learners. Please note that an applicant cannot decide the courses by him/herself and the decision will be made by Meijo University.

#### ■ **International Japanese Studies**

International Japanese Studies will be taught in English to learn more about its culture, history and Chubu (Central) Region around us. From history of Japan to Japanese Pop Culture, you can explore a wide variety of fields about Japan. One course includes four 90-minute lectures/lessons in a week.

#### ■ **Japanese Cultural Experience**

MU will organize various exciting and popular cultural activities (Manga, Pop music, and Japanese Idol Culture). It's a great opportunity for you to learn about Japanese culture in-depth.

**4. Accommodation****MU Dormitory**

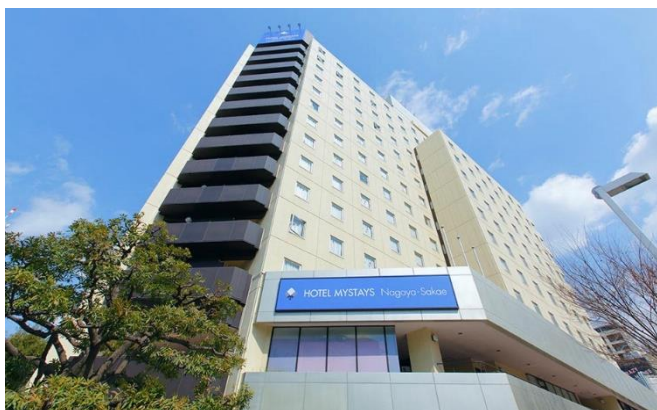
Note: Applicants must be studying at our current partner university and obey to the MU dormitory rules.

<b>Name</b>	Meiho Shiogama 〒468-0073 Meiho Shiogama, 1-825-1 Shiogamaguchi, Tempaku Ward, Nagoya	
<b>Nearest Station</b>	3-minute walk from “Shiogama” of the subway Tsurumai Line	
<b>Facility</b>	Rooms	All single rooms
	Inside	Lights, Air Conditioning, Bed& Bedding, Wash Basin ,Curtain, Desk, Chair, Closet ,Shower room, Bath tub, Toilet, Wash Basin, Fridge, Mini Kitchen Security Automated Door
	Shared Facilities	Coin-op Laundry (Washing Machines and Dryers available), Rooftop clothes drying place
	Others	Apartment Manager is at the reception on Weekdays 9:00~17:00 <b>Check in: June 26<sup>th</sup> 10:00~16:00</b> <b>Check out: July 14<sup>th</sup> 9:00~11:00</b>
	Space	9.72m <sup>2</sup> ~ #The sizes slightly vary depends on the rooms
	Internet	free Wi-Fi connection is available
<b>Duration of stay</b>	The duration of your stay is decided by MU to cover the period of the program. <b>Participant is requested to leave the dormitory on/before 14<sup>th</sup> of July.</b>	
<b>Notes</b>	#No guests are allowed to stay over nights #No Smoking and No drinking	



**Hotel**

<b>Name</b>	HOTEL MYSTAYS Nagoya Sakae 〒460-0005 2-23-22 Higashisakura, Naka-ku, Nagoya-shi, Aichi JAPAN <a href="https://www.mystays.com/en-us/hotel-mystays-nagoya-sakae-aichi/">https://www.mystays.com/en-us/hotel-mystays-nagoya-sakae-aichi/</a>	
<b>Nearest Station</b>	7 min walk from exit 5 of Sakae Station	
<b>Facility</b>	Rooms	All single rooms
	Inside	Lights, Air Conditioning, Bed& Bedding, Wash Basin ,Curtain, Desk, Chair, Closet ,Shower room, Toilet , Fridge, Security Automated Door
	Shared Facilities	Coin-op Laundry (Washing Machines and Dryers available)
	Others	<b>Check in: June 26<sup>th</sup> 14:00~00:00</b> <b>Check out: July 14<sup>th</sup> 9:00~11:00</b>
	Space	12.2m <sup>2</sup> #The sizes slightly vary depends on the rooms
	Internet	free Wi-Fi connection is available
<b>Duration of stay</b>	<b>Participant is requested to leave the dormitory on/before 14<sup>th</sup> of July.</b>	
<b>Notes</b>	#No guests are allowed to stay over nights #No Smoking and No drinking	



**5. Program Fee**

A	JPY 187,340 (Program fee + Hotel )
B	JPY 120,500 (Program fee + MU dormitory)

**Note: Applicants must be studying at our current partner university and obey to the MU dormitory rules.**

Waived	Tuition, airport pick-up fee, field trips(Total:JPY150,000)
Included	Japanese Cultural Experience fees, * Suica (JP¥8000), *accommodation, domestic travel insurance. *Suica is an IC (smart) card that holds electronic money which can be used to pay for railway tickets.
Not included	Round-trip flight ticket, visa fees , overseas insurance voucher, personal allowances, meals ,Wi-Fi ※Every participant is requested to individually join <b><u>overseas travel insurance.</u></b>

<b>Tuition: <del>JPY150,000</del>(Waived)</b>
<b>Fee: (A) JPY 187,340</b>
<b>(B) JPY 120,500</b>
<hr/>
<b>*Grand total: (A) JPY 187,340</b>
<b>(B) JPY 120,500</b>

\* We will announce the bank account details as soon as we finalize the total number of participants.

\* We accept Japanese Yen only. Applicant must make the exact amount of Yen remittance without any excess nor lack of money. Applicant must pay all additional charges for making the remittance, including these service charges at the local bank and main bank in your home country.

**6. Important Dates and Plans (Tentative)**

<b>April 24<sup>th</sup>, 2023</b>	<b>Submitting application form deadline.</b>
End of April.	Paying program fees
End of April.	Taking Online Japanese placement test
Middle of May.	Applying a Visa in your country
Middle of May.	Attending Pre-departure Online Orientation
26 <sup>th</sup> June	Arriving Date/MU Dormitory, Hotel Check-In.
27 <sup>th</sup> June	2023 MEIJO JAPAN STUDY TOUR-Summer begins
13 <sup>th</sup> July	2023 MEIJO JAPAN STUDY TOUR-Summer ends
14 <sup>th</sup> July	Dormitory, Hotel Check-Out.



## **7. Date of Arrival**

### **26th June (Arriving Date/ MU Dormitory, Hotel Check-In)**

Please note that participant should arrive on the designated date. MU staff will be at **Chubu International Airport** on the arrival date to pick up participants.

## **8. Other matters to pay attention**

(1)All participants will attend pre-departure online orientation sessions that give a comprehensive overview of the program content, communications, emergency measures, and more.

(2)While staying in Japan participants are not allowed to drive a car or to operate anything which requires a license. In addition to the above mentioned, MU may stop the program and advise to leave Japan in case of unreported absence, unfavorable academic performance or negligence of guidance by MU.

### **【Got a Question? Contact Us】**

If you have any questions please do not hesitate to contact to us.

Meijo University Office of International Affairs

1-501 Shiogamaguchi, Tempaku-ku, Nagoya 468-8502 Japan

E-mail : [mint@ccml.meijo-u.ac.jp](mailto:mint@ccml.meijo-u.ac.jp)

TEL : +81-52-838-2043

## 9. Documents required for applying

Application for 2023 MEIJO JAPAN STUDY TOUR-Summer short term program is to be submitted to MU only through the Internet. Please refer to the online form in the following pages and submit before the deadline. A list of documents to submit is as follows.

### ■ List of documents to submit

**Application Deadline: April 24th, 2023**

	Document	Explanation	How to submit
(A)	Photograph of the face (size : 4cm x 3cm)	A photograph of the face taken within three months (JPEG File)	To be uploaded See 10.
(B)	Certificate of academic record issued by your university (in English or Japanese)		All documents should be in one PDF file and to be uploaded See 10.
	Form 5 : Meijo University Application for Admission (for Short Term Students)		
	Meijo University Housing (MU dormitory)Application Form*	* <b>Note: Applicants must be studying at our <u>current partner university</u> and obey to the MU dormitory rules.</b>	
	Passport copy ( A page showing your face photograph)		

## 10. Information on Online Form for Registration

#For student log-in URL

1. Access from the following link to register as an applicant.

**URL:** <https://bit.ly/2EeWVEu>

■Log-in ID for students

\*IDs are set differently according to which university you belong to/work for

To enter, click “Short term Program” button.

A student will be asked to decide and input his/her own e-mail address and password. He or she can correct or continue by logging back into the same account.

■Once you register your information, you may correct it from the URL below.

<https://bit.ly/2q1HrPK>

In order to correct you need e-mail address and Password that you set when registered.

## #Log-in ID for students

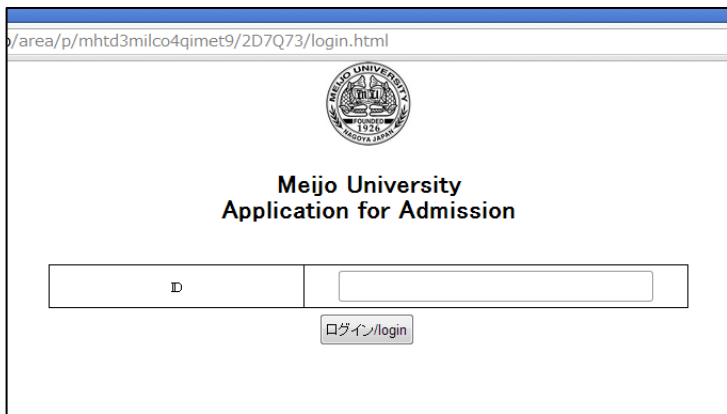
IDs are set differently according to which university you belong to/work for

University	ID
CUNY Hunter College	MJ_HUNTER
Utah Tech University	MJ_DSU
Murray State University	MJ_MSU
Lewis-Clark State College	MJ_LCSC
University of Quebec in Montreal	MJ_UQAM
Queensland University of Technology	MJ_QUT
University of Augsburg	MJ_AUG
University of Oslo	MJ_UIO
Baruch College of The City University of New York	MJ_BARUCH
Northern Arizona University	MJ_NAU
The University of Hull	MJ_HULL
University of York	MJ_YORK
University of Miskolc	MJ_MSKLC
ICN Graduate Business School	MJ_ICN
The University of New South Wales	MJ_UNSW
The University of Melbourne	MJ_UMELB
Newcastle University	MJ_NCL
La Trobe University	MJ_LTRB
The University of Queensland	MJ_UQ
University of Tasmania	MJ_UTAS
The University of Western Australia	MJ_UWA
Macquarie University	MJ_MQ
RMIT University	MJ_RMIT
Victoria University of Wellington	MJ_WGTN
University of Auckland	MJ_AKL
University of Otago	MJ_OTAGO
University of Canterbury	MJ_UOC
Massey University	MJ_MASSEY
University of Zaragoza	MJ_UNIZAR
University of Keele	MJ_KL
University of Zurich	MJ_UZH
Jaume I University	MJ_UJI
DePaul University	MJ_DPU
University of Lethbridge	MJ_LET
University of Arizona	MJ_ARI
University of Houston	MJ_UH
Others	MJ_ST

(1) Online Form . . . How to register

[Please input information to online form with alphabets.](#)

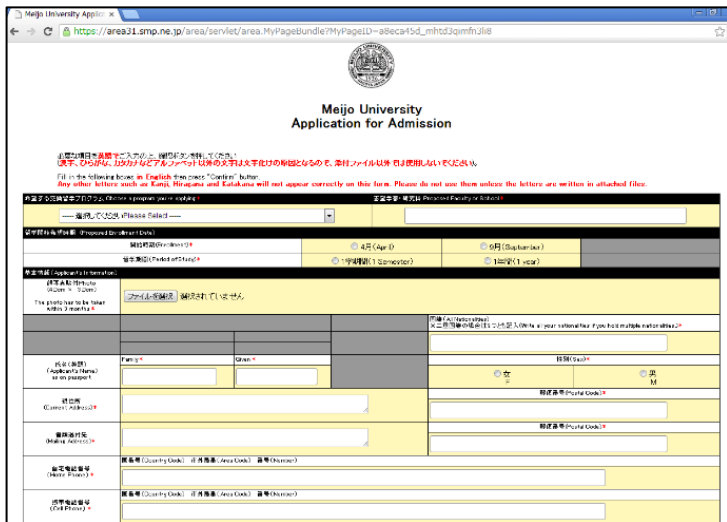
1. Access <https://bit.ly/2EeWVEu> and enter your university ID, then click “login.”



2. Select “Short term program



3. Enter necessary information in alphabets.



## (2) Uploading materials and documents

### (A) ID Photo

基本情報 (Applicant's Information)	
顔写真貼付Photo (4.0cm × 3.0cm) The photo has to be taken within 3 months *	<input type="button" value="ファイルを選択"/> 選択されていません

⇒ In “Applicant’s Information” section, upload ID Photo taken within 3 months with JPEG format.

“ID photo” means;

- Your head must face the camera directly with full face in view.
- You must have a neutral facial expression or a natural smile, with both eyes open.
- Use a plain white or off-white background

添付ファイル(attached file)			
添付ファイル1(attach file 1)*	Download (📄) (file) enter your information, then attach it/them. <input type="button" value="Summer School Students"/> <input type="button" value="Exchange Students"/>	添付ファイル2(attach file 2)*	<input type="button" value="ファイルを選択"/> 選択されていません
	<input type="button" value="ファイルを選択"/> 選択されていません		



#### 【Download】

1. Form 5: Meijo University Application for Admission (for Short Term Students)
  2. Meijo University Housing Application Form\*
- \* **Note: Applicants must be studying at our current partner university and obey to the MU dormitory rules.**

#### 【Upload】

1. Certificate of academic record issued by your university (in English or Japanese)
2. Form 5: Meijo University Application for Admission (for Short Term Students)
3. Passport Copy
4. Meijo University Housing Application Form\*

Scan the above and convert them into 1 PDF file. Then upload from “ファイルを選択” button.